

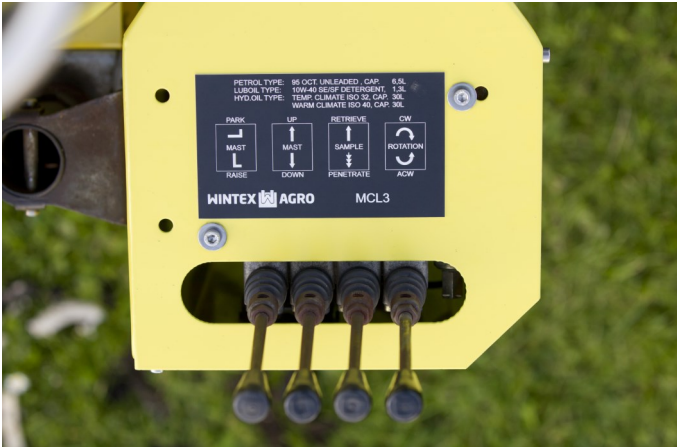
WINTEX MCL3

The future is in the soil -
and in professional soil samples



WINTEX MCL3

The future is in the soil -
and in professional soil samples



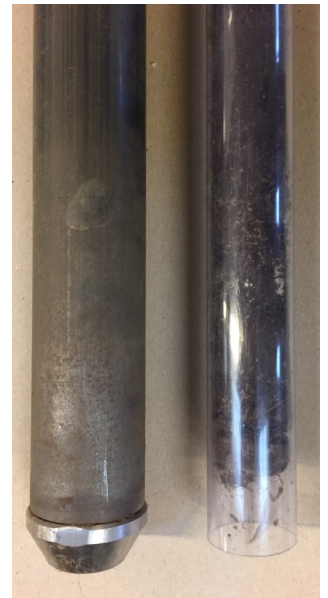
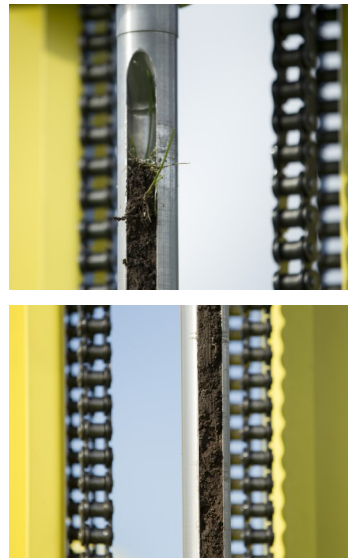
Operating the soil sampler happens by activating the functions of the control panel.



The probe goes into the ground by the means of a high-frequency hammer.



The tip of the probe is specially designed and ensures homogeneous and representative soil samples.



Extras: a custom-made probe with an integrated plastic liner makes it possible to extract and keep a whole core of soil.



The soil is removed from the probe and filled into the soil bins with a sampling scoop and a scraper.

WINTEX MCL3

The future is in the soil -
and in professional soil samples



The **WINTEX MCL3** is an extremely robust soil sampler which takes high-quality soil samples in any kind of soil, also in very hard soils. It is most often used for the intensive work involved in measuring the remaining content of nitrate in the soil. The soil sampler is available for samples from 0-120 cm or 0-200 cm.

Soil sampling is conducted from the control panel and is carried out by a hydraulic system which lifts the mast into the working position, positions it on the ground, gets the probe into the ground and rotates the probe.

A special valve automatically provides maximum speed according to the type of soil. Therefore it is not necessary to adjust the speed. A high-frequency hammer together with the rotation system of the probe ensures that the **WINTEX MCL3** takes complete and homogeneous soil samples.

The **WINTEX MCL3** has its own hydraulics and can be mounted on a wide range of carrier vehicles.

A lighter and more economical type of the soil sampler, the **Wintex MCL3T**, is specially developed to be mounted on tractors. As it does not have a hydraulic system, it must be connected to the hydraulics of the tractor.



WINTEX MCL3

The future is in the soil -
and in professional soil samples

The **WINTEX MCL3** has its own hydraulic system and can be mounted on pick-ups, UTVs, caterpillar and other vehicles.
The **WINTEX MCL3T** is a lighter and more economical soil sampler for tractors and must be connected to the hydraulics of it.



WINTEX MCL3

Carrier vehicles:	Pick-ups, UTVs, caterpillar vehicles and more
Sample depth:	0-120 cm or 0-200 cm
Diameter probe:	35 mm
Sticks / hour:	60
Volume / sample:	300-500 g
Hydraulics:	Honda GX390 engine, 11 hp, with electric starter
Hydraulic consumption:	20 l / min., 120 bar
Hydraulic tank:	30 l
Net weight:	420 kg

WINTEX MCL3T

Carrier vehicles:	Tractors
Sample depth:	0-120 cm or 0-200 cm
Diameter probe:	35 mm
Sticks / hour:	60
Volume / sample:	300-500 g
Hydraulics:	-
Hydraulic consumption:	-
Hydraulic tank:	-
Net weight:	290 kg